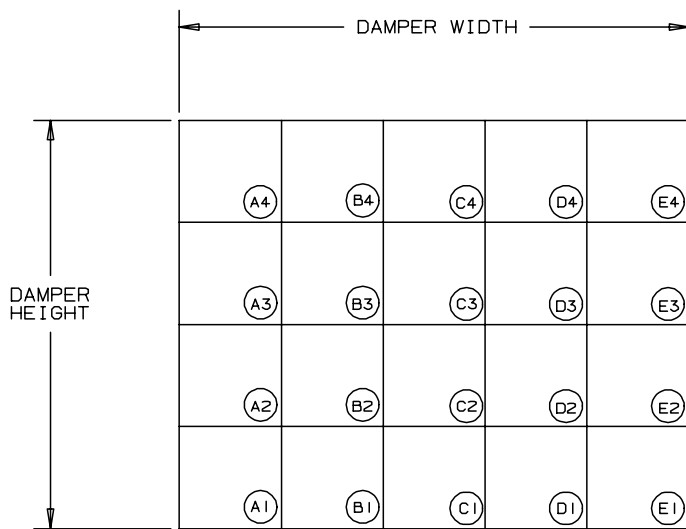
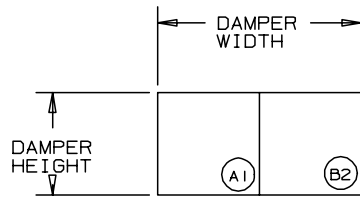


DAMPER
CONSTRUCTION
DETAILS

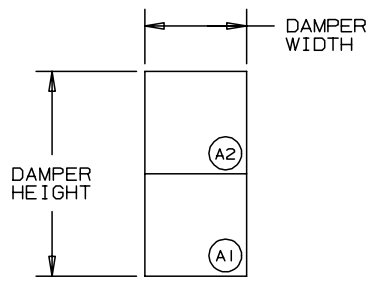
DAMPER TAGGING



REAR ELEVATION

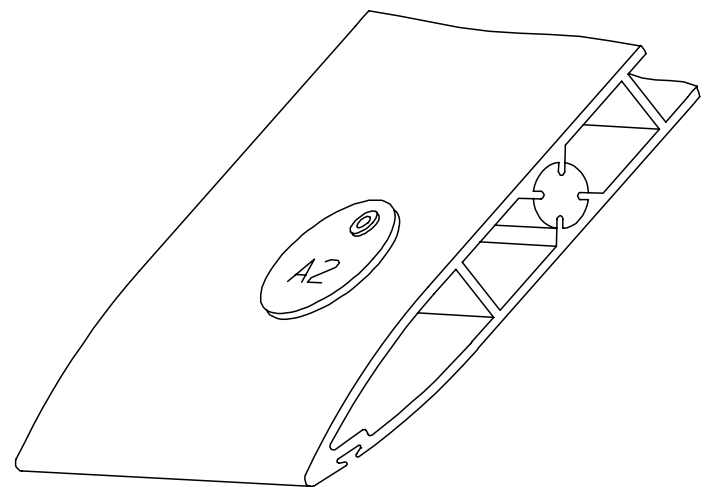


REAR ELEVATION



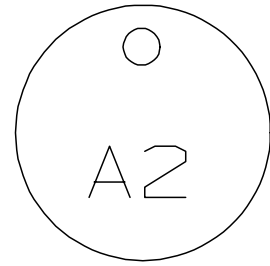
REAR ELEVATION

•• ALL TAG IDENTIFICATION WILL BE LOCATED AT THE REAR OF ALL DAMPER SECTIONS, IN THE LOCATIONS SHOWN ON THE ABOVE ELEVATIONS. TAGS WILL BE APPROX. 1 1/4" DIA. ALUMINUM, WITH 1/4" HIGH LETTERING STAMPED INTO THE ALUMINUM. TAGS WILL BE RIVETED TO THE BOTTOM HALF OF THE FIRST BLADE OF EACH SECTION.



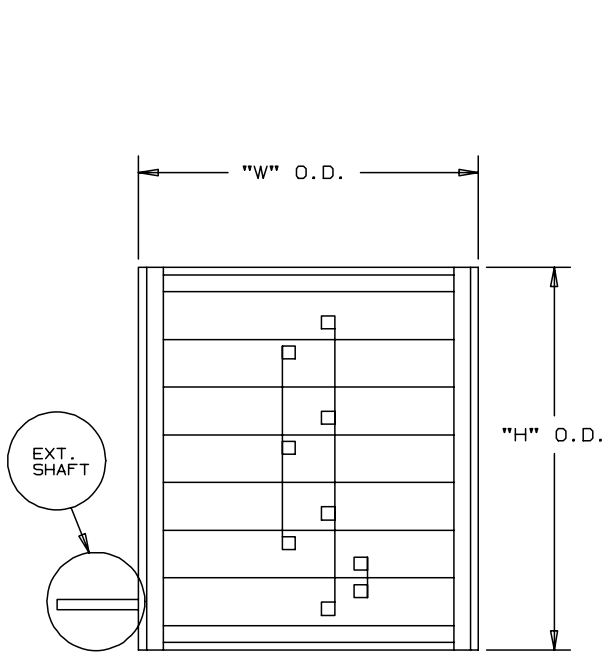
DAMPER TAG MOUNTING
DETAIL

• FRAME MEMBERS NOT SHOWN FOR CLARITY.

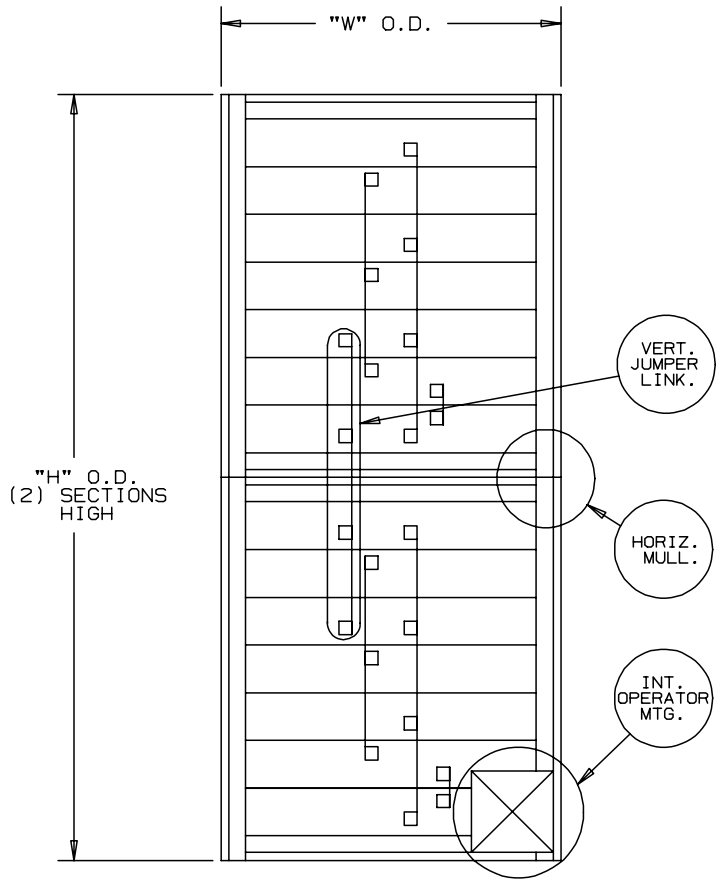


DAMPER TAG
DETAIL

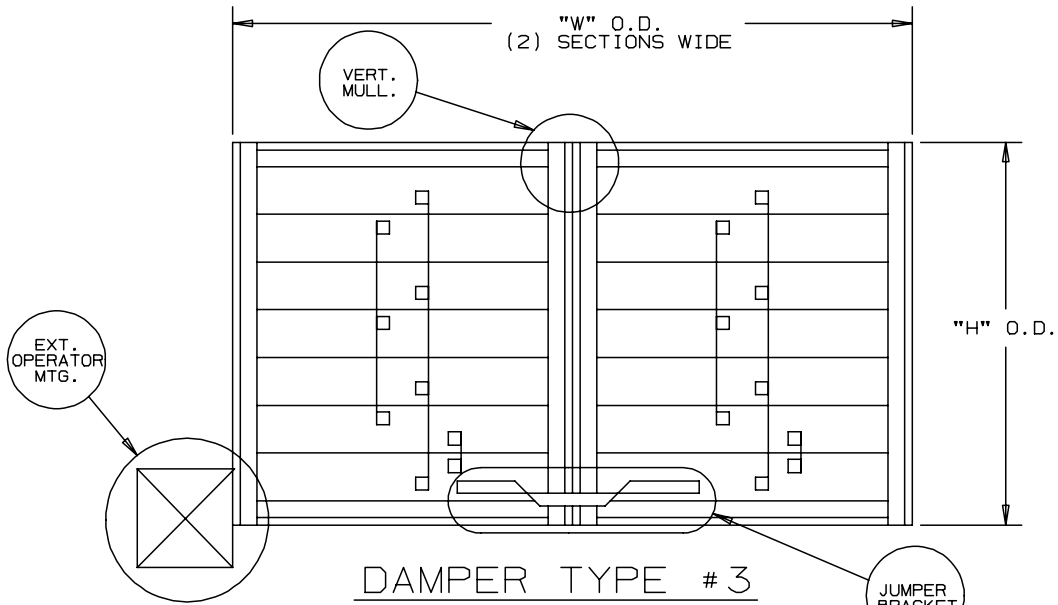
TYPICAL SCHEMATIC DAMPER ELEVATIONS



DAMPER TYPE # 1
SINGLE PANEL WITH EXTENDED SHAFT

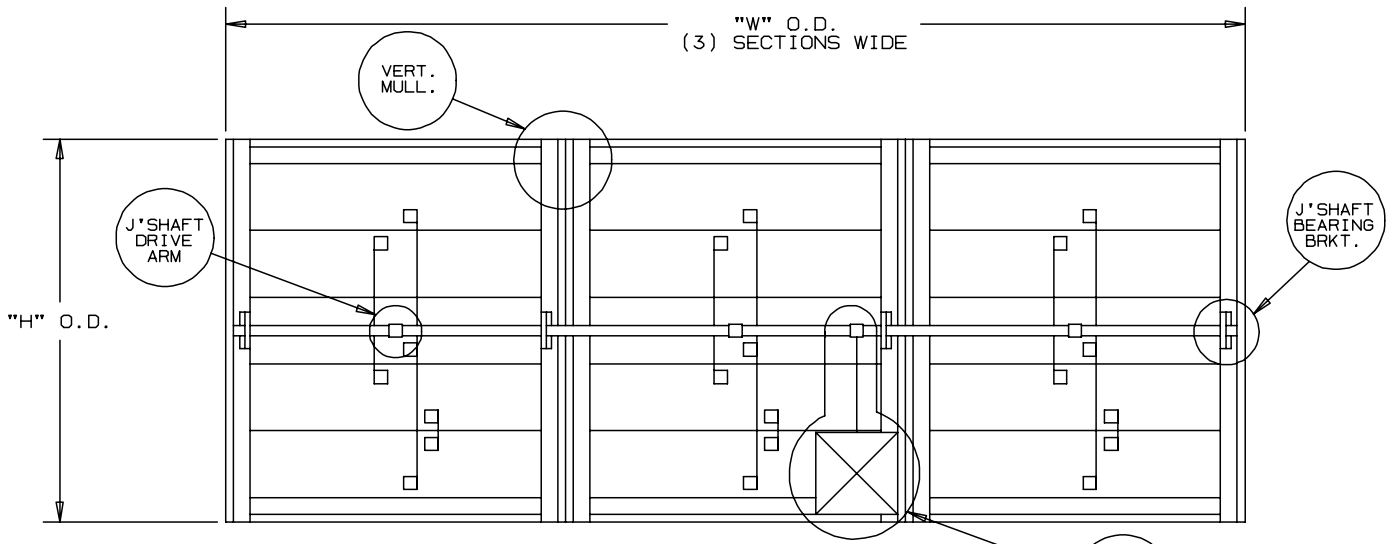


DAMPER TYPE # 2
HORIZONTAL MULLION WITH VERTICAL JUMPER LINKAGE AND INTERNALLY MOUNTED OPERATOR ONE SECTION WIDE BY TWO SECTIONS HIGH



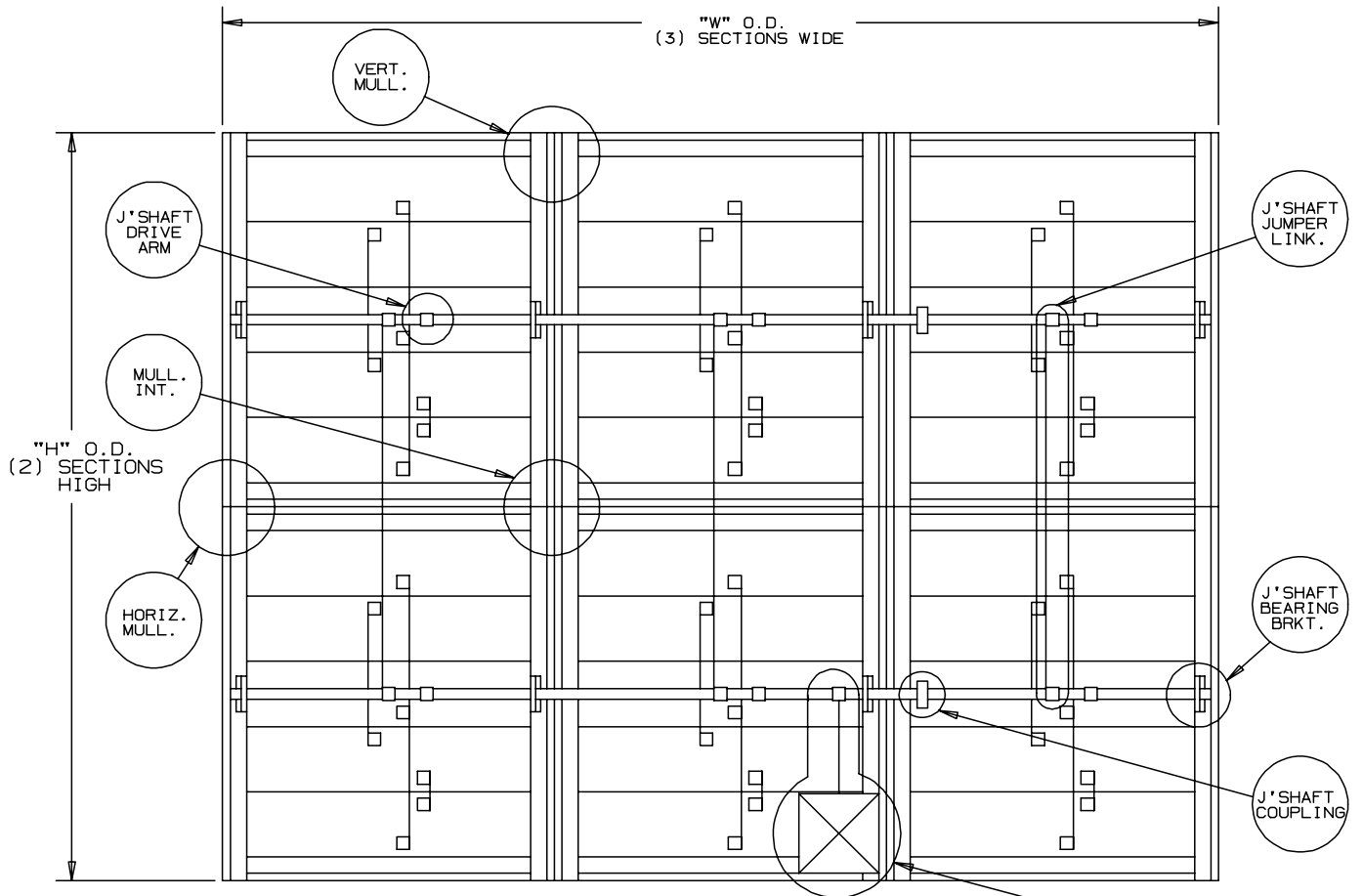
DAMPER TYPE # 3
VERTICAL MULLION WITH JUMPER BRACKET, EXTENDED SHAFT AND EXTERNALLY MOUNTED OPERATOR TWO SECTIONS WIDE BY ONE SECTION HIGH

TYPICAL SCHEMATIC DAMPER ELEVATIONS



DAMPER TYPE #4

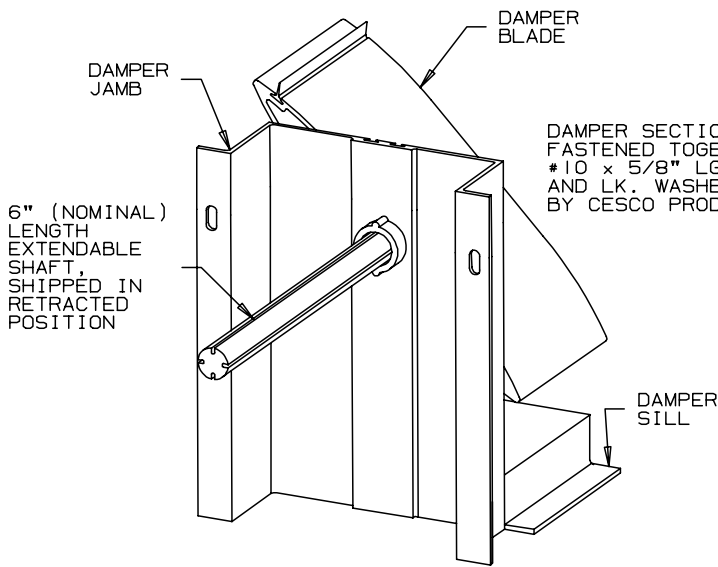
VERTICAL MULLIONS WITH JACKSHAFTING AND INTERNALLY MOUNTED OPERATOR DRIVING TO JACKSHAFTING MULTI-SECTIONS WIDE BY ONE SECTION HIGH



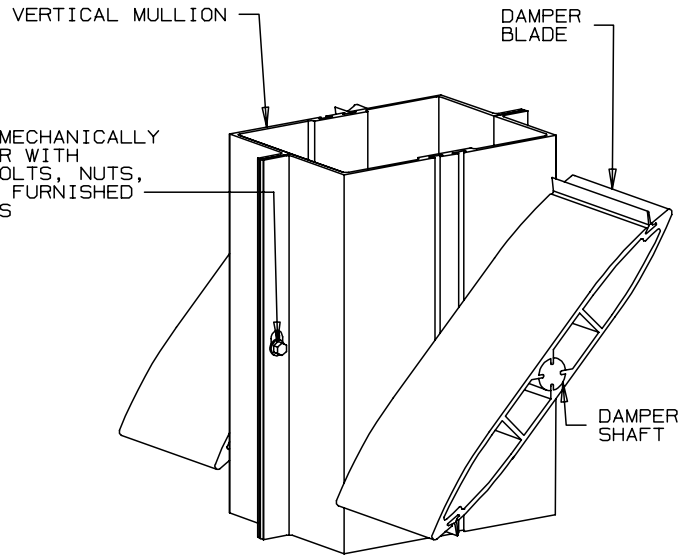
DAMPER TYPE #5

VERTICAL AND HORIZONTAL MULLIONS WITH INTERCONNECTED JACKSHAFTING AND INTERNALLY MOUNTED OPERATOR DRIVING TO LOWER JACKSHAFT MULTI-SECTIONS WIDE BY MULTI-SECTIONS HIGH

EXTRUDED ALUMINUM DAMPER DETAILS

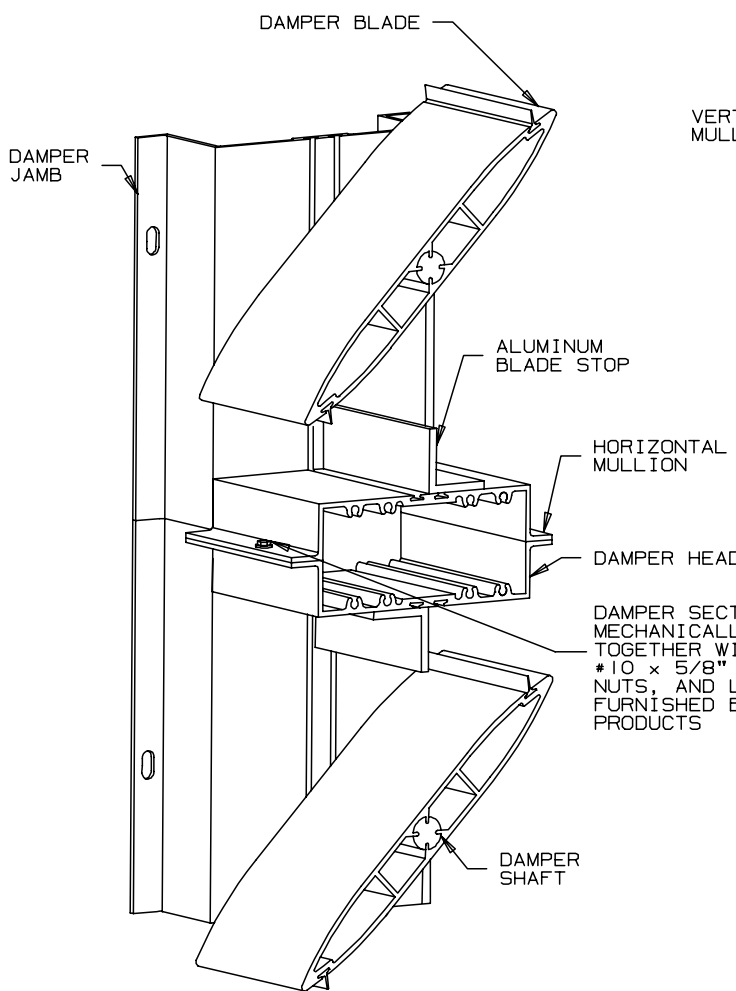


DETAIL # 1

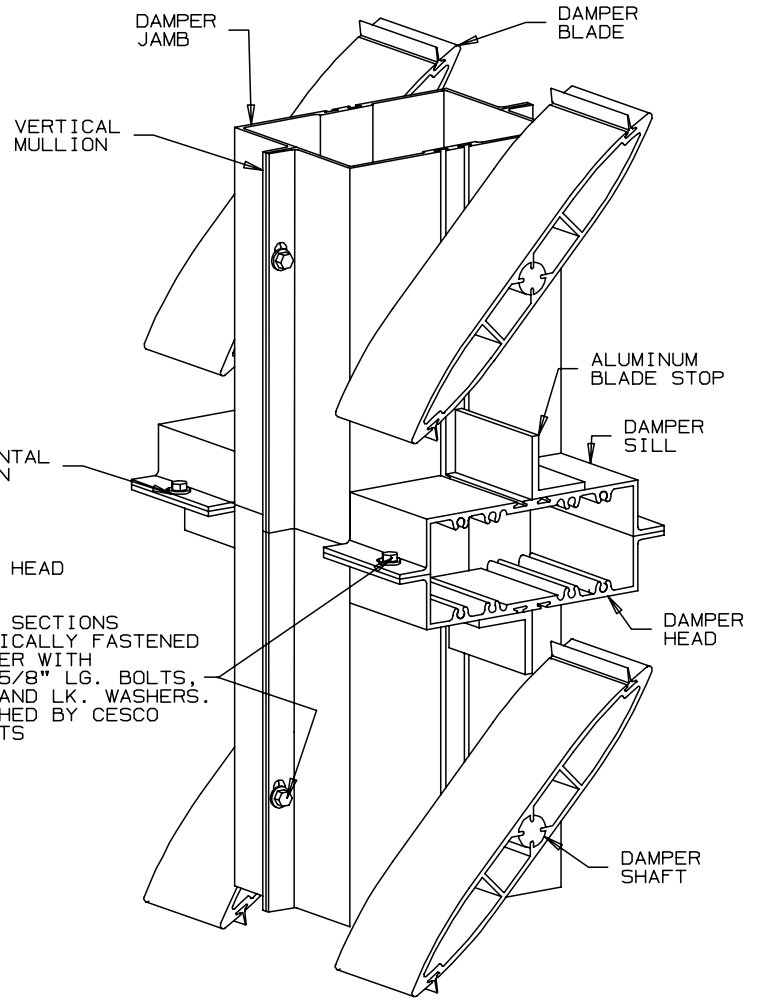


DETAIL # 2

DAMPER SECTIONS MECHANICALLY FASTENED TOGETHER WITH #10 x 5/8" LG. BOLTS, NUTS, AND LK. WASHERS. FURNISHED BY CESCO PRODUCTS



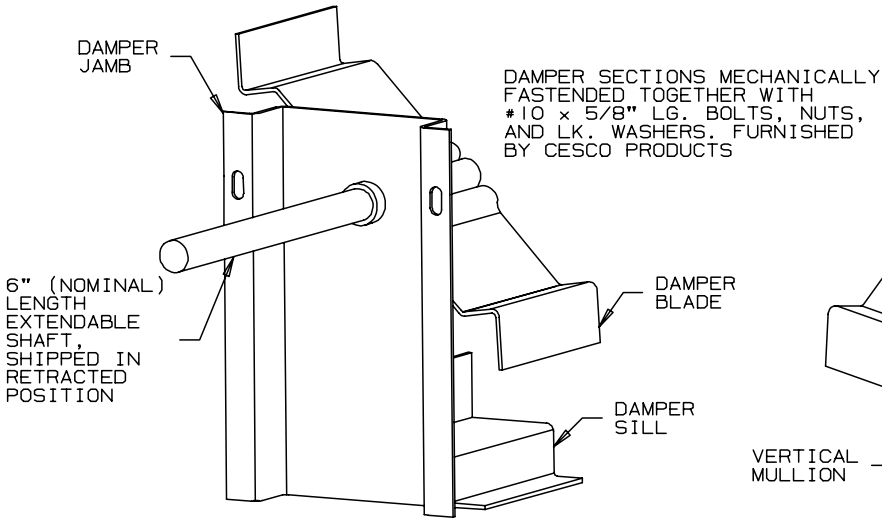
DETAIL # 3



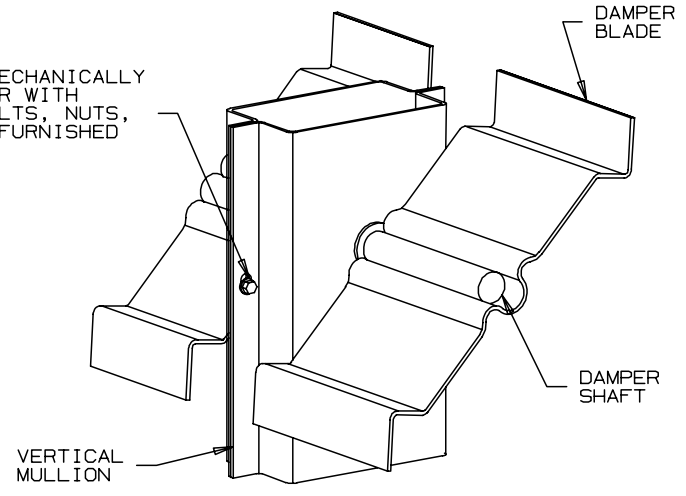
DETAIL # 4

DAMPER SECTIONS MECHANICALLY FASTENED TOGETHER WITH #10 x 5/8" LG. BOLTS, NUTS, AND LK. WASHERS. FURNISHED BY CESCO PRODUCTS

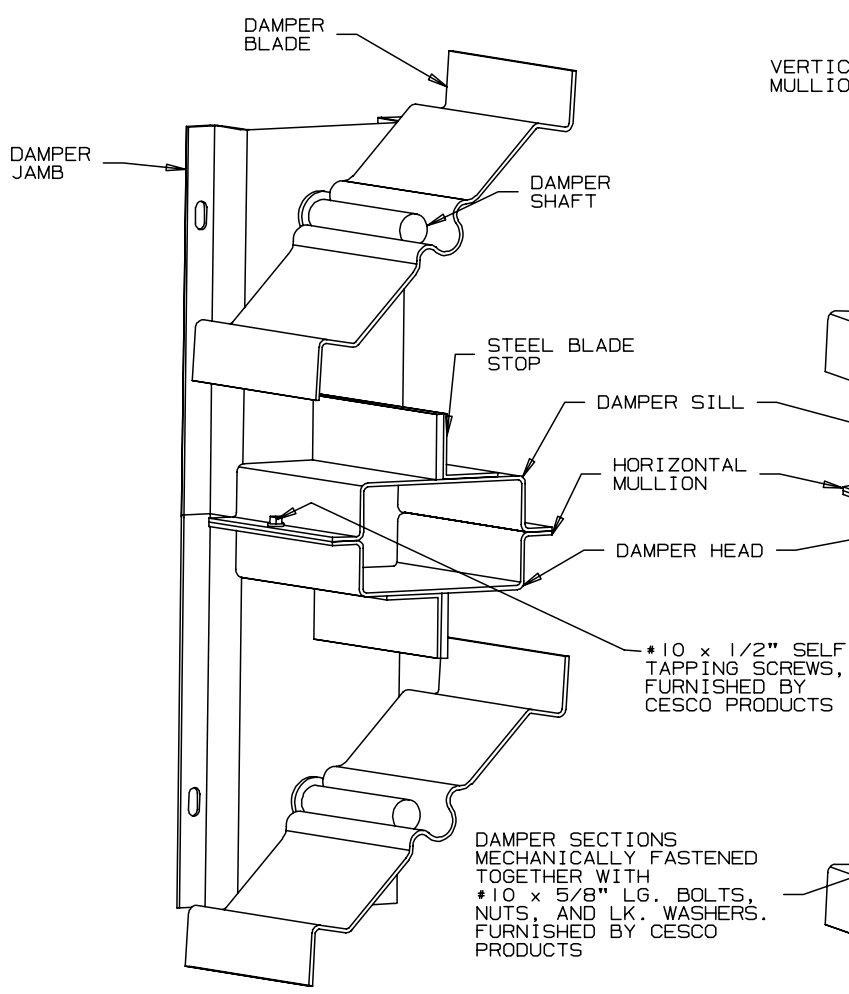
FABRICATED STEEL DAMPER DETAILS



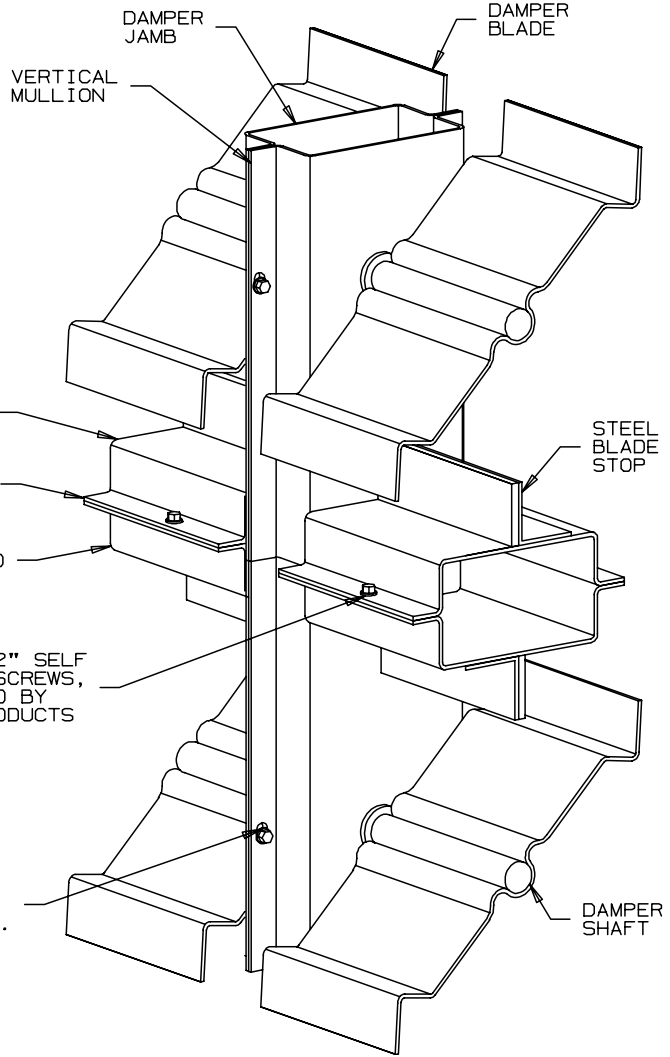
DETAIL # 5



DETAIL # 6

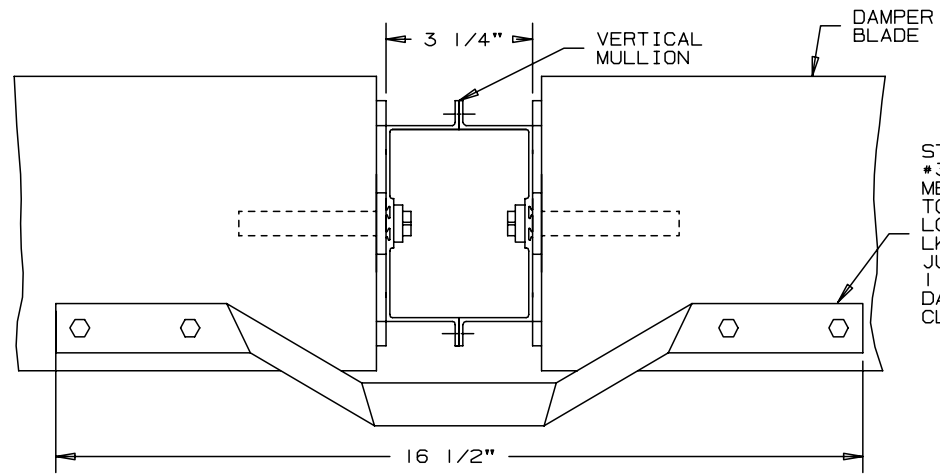


DETAIL # 7



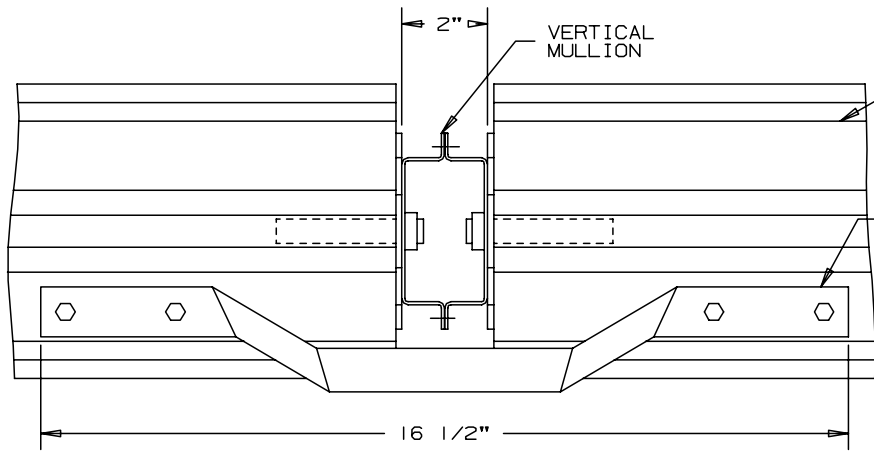
DETAIL # 8

DAMPER INTERCONNECTING DETAILS



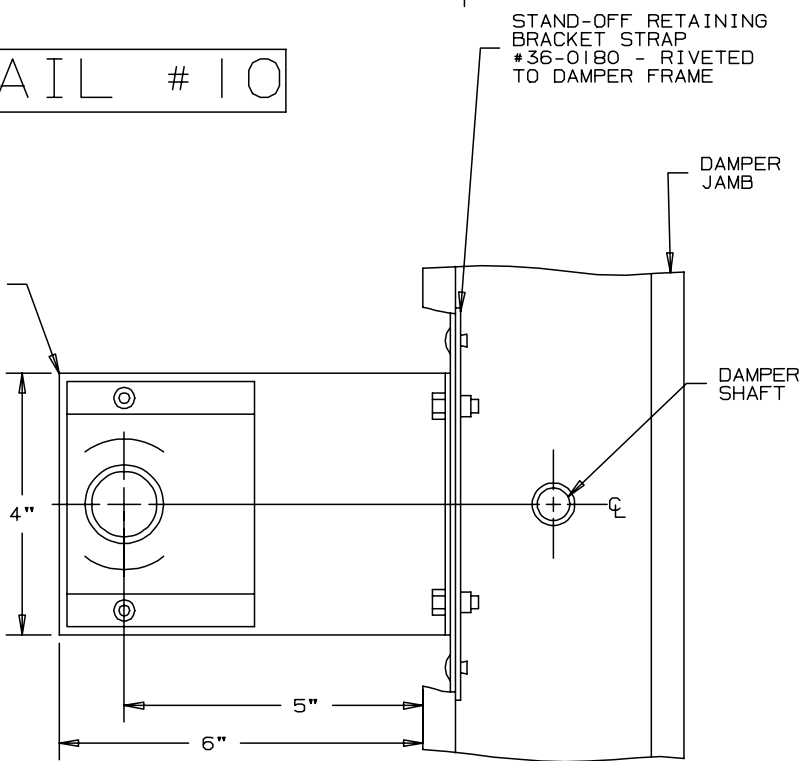
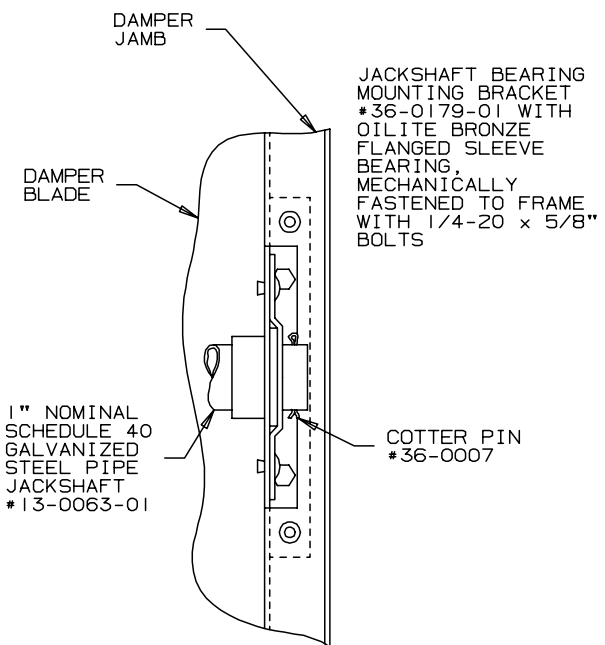
STEEL JUMPER BRACKET #38-0018-01, MECHANICALLY FASTENED TO BLADE WITH #10 x 1" LG. BOLTS, NUTS, AND LK. WASHERS
 JUMPER BRACKET EXTENDS 1 1/2" FROM FACE OF DAMPER FRAME IN THE CLOSED POSITION

DETAIL # 9



STEEL JUMPER BRACKET #38-0017-01, MECHANICALLY FASTENED TO BLADE WITH #10 x 5/8" LG. BOLTS, NUTS, AND LK. WASHERS
 JUMPER BRACKET EXTENDS 1" FROM FACE OF DAMPER FRAME IN THE CLOSED POSITION

DETAIL # 10

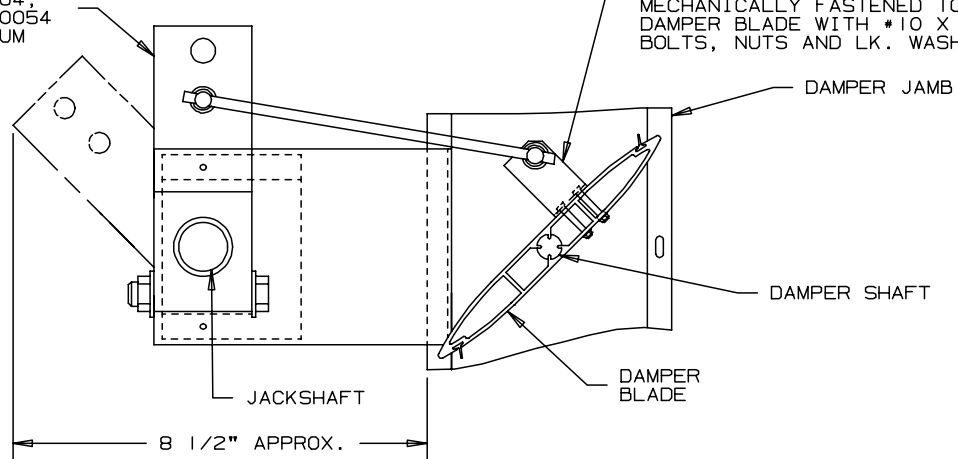


DETAIL # 11

DAMPER INTERCONNECTING DETAILS

H.D. DRIVE ARM #36-0168-05
WITH TRUNNION #36-0113-02,
CELCON BEARING #34-0004,
AND NYLON WASHER #34-0054
AND 5/16" DIA. ALUMINUM
INTERCONNECTING ROD

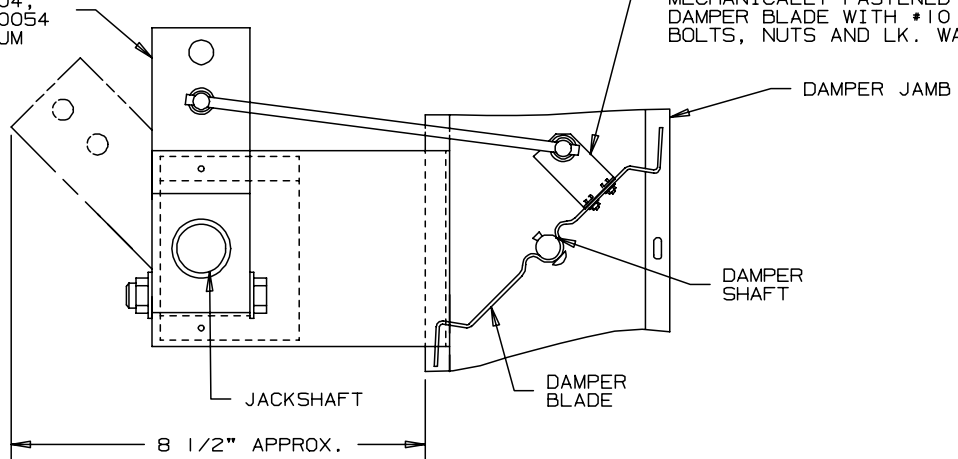
BLADE CLIP #38-0120-01
WITH TRUNNION #36-0113-02,
CELCON BEARING #34-0004,
AND NYLON WASHER #34-0054
MECHANICALLY FASTENED TO
DAMPER BLADE WITH #10 X 1" LG.
BOLTS, NUTS AND LK. WASHERS



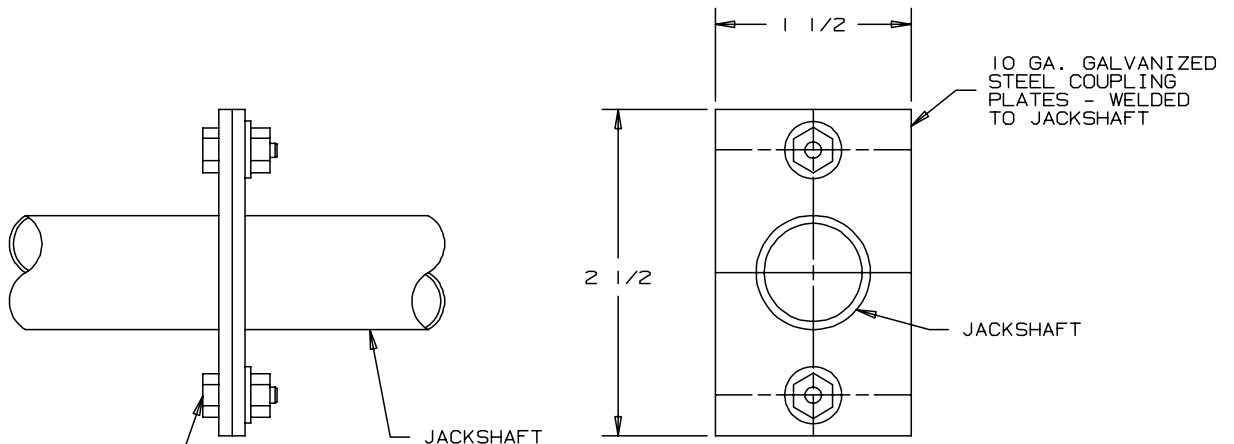
DETAIL # 12

H.D. DRIVE ARM #36-0168-05
WITH TRUNNION #36-0113-02,
CELCON BEARING #34-0004,
AND NYLON WASHER #34-0054
AND 5/16" DIA. ALUMINUM
INTERCONNECTING ROD

BLADE CLIP #38-0120-01
WITH TRUNNION #36-0113-02,
CELCON BEARING #34-0004,
AND NYLON WASHER #34-0054
MECHANICALLY FASTENED TO
DAMPER BLADE WITH #10 X 1" LG.
BOLTS, NUTS AND LK. WASHERS



DETAIL # 13

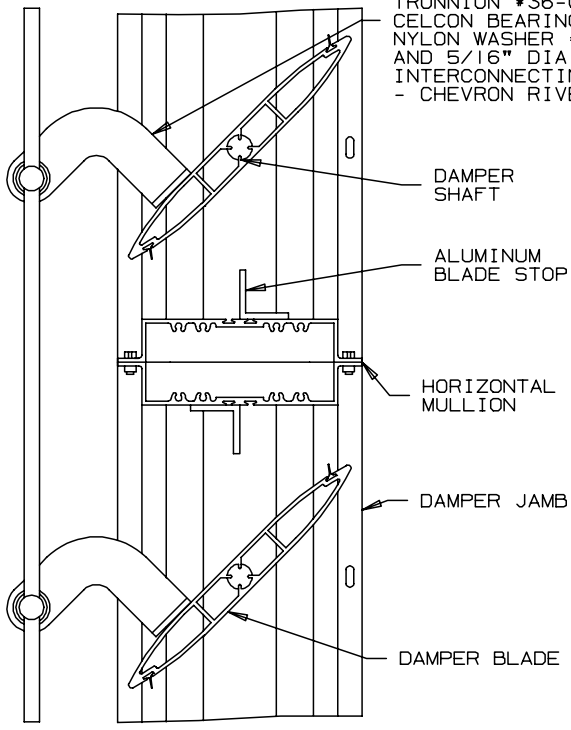


1/4 X 3/4" LG. BOLTS
WITH NUTS AND LK.
WASHERS

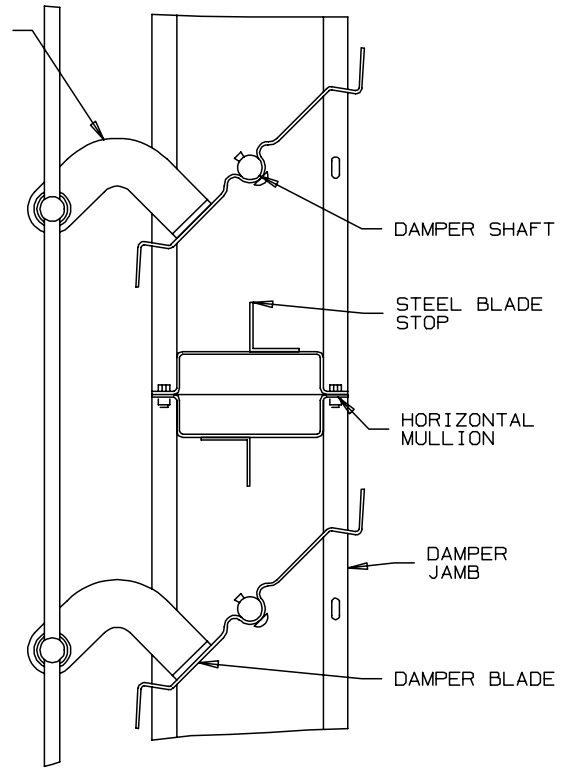
DETAIL # 14

DAMPER INTERCONNECTING DETAILS

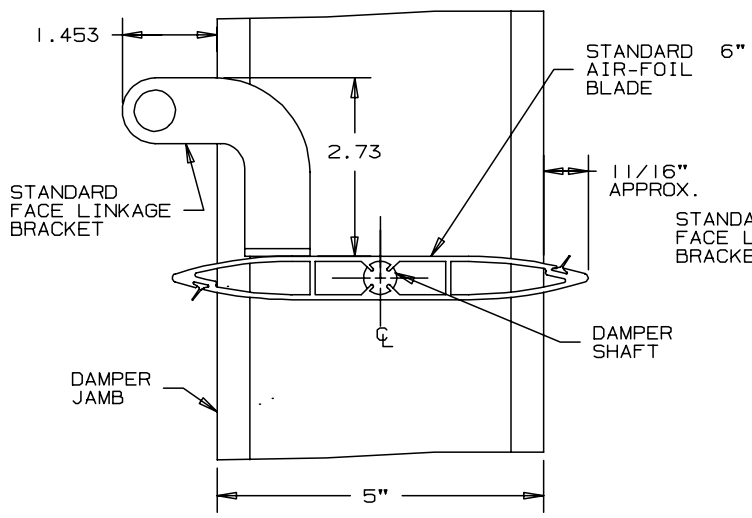
INTERCONNECTING LINKAGE
 CONSISTING OF: CHEVRON
 #38-0055-01 WITH
 TRUNNION #36-0113-02,
 CELCON BEARING #34-0004,
 NYLON WASHER #34-0054,
 AND 5/16" DIA. ALUMINUM
 INTERCONNECTING ROD.
 - CHEVRON RIVETED TO BLADE



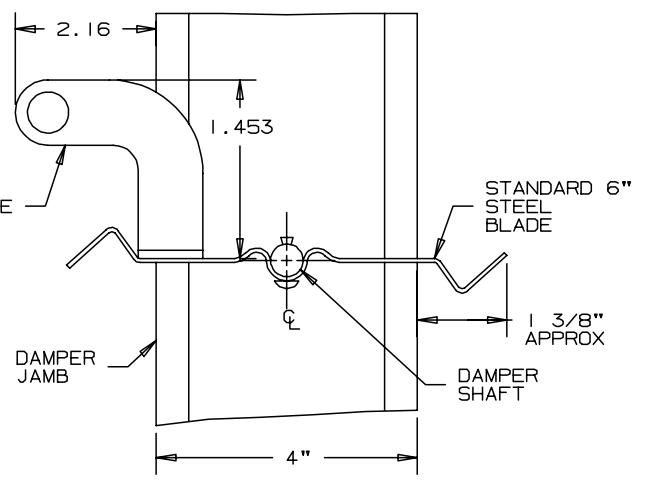
DETAIL # 15



DETAIL # 16

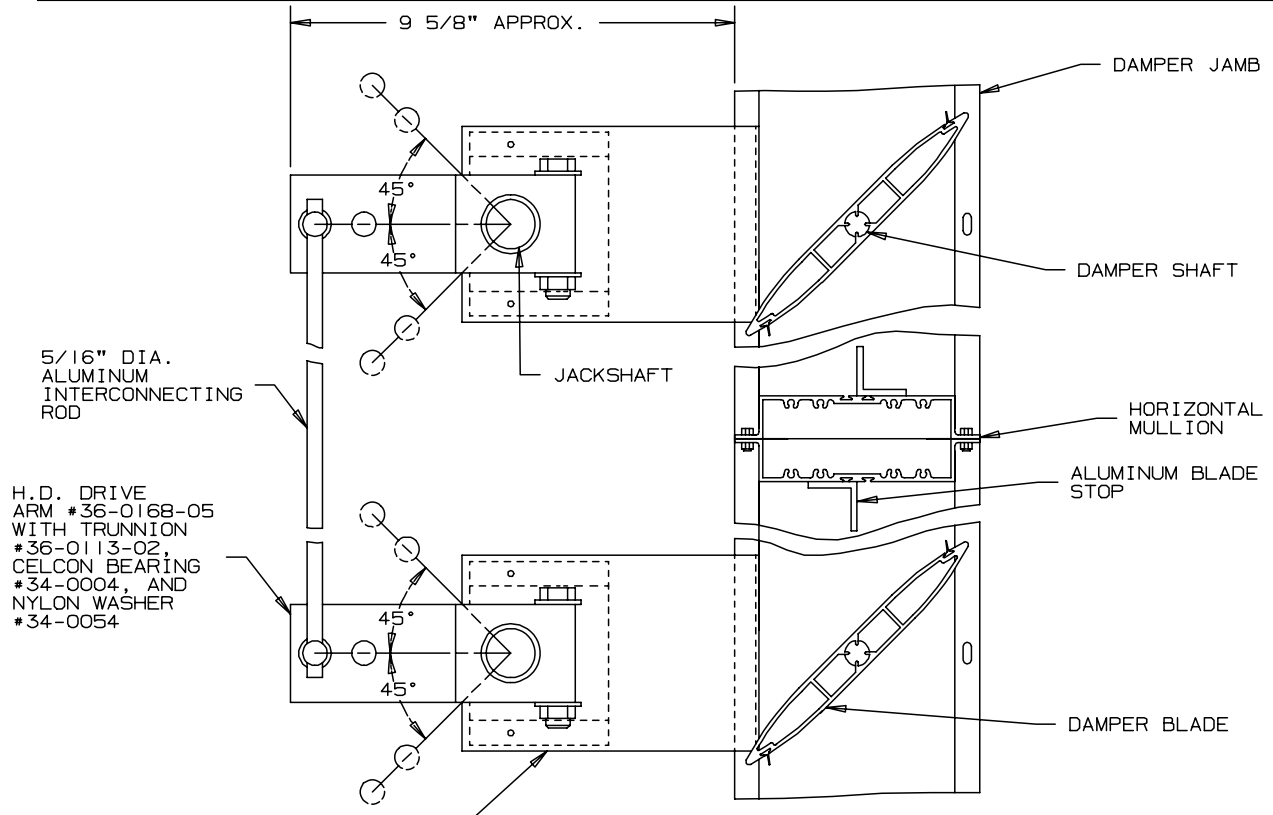


DETAIL # 17



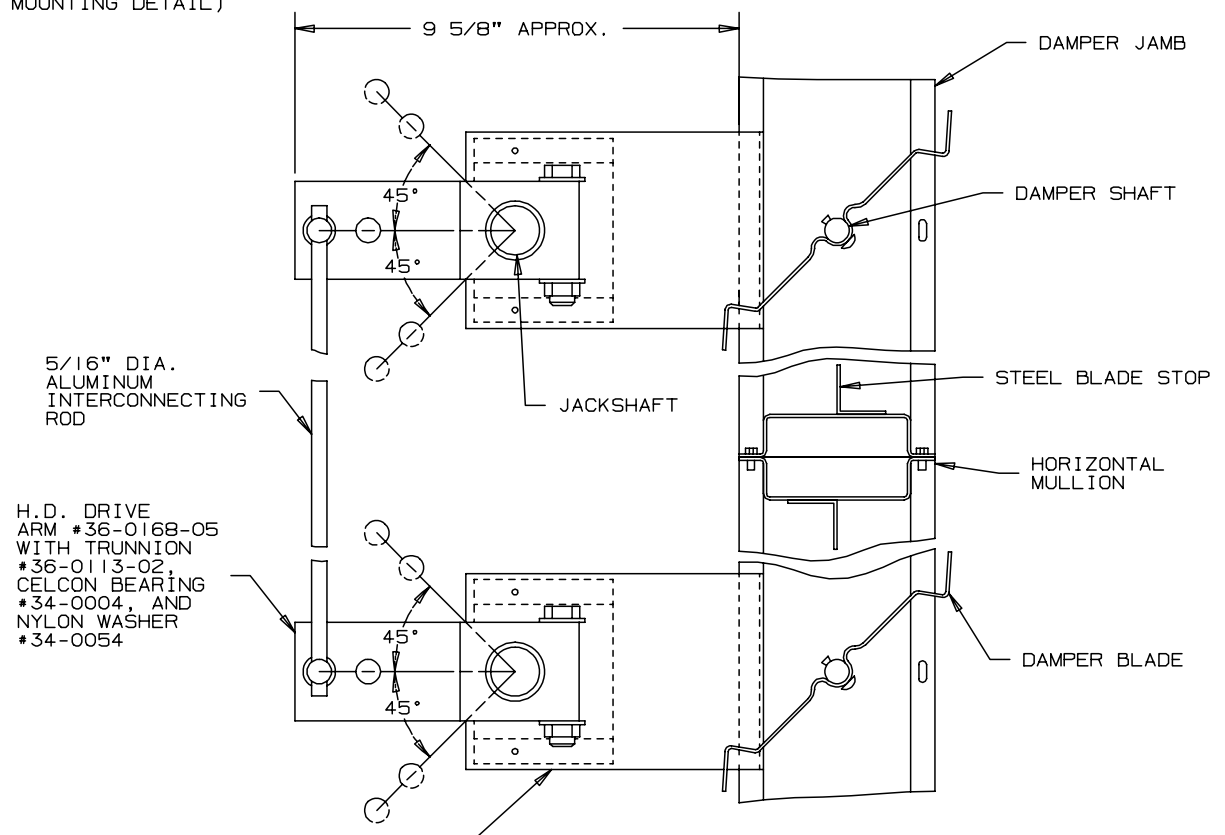
DETAIL # 18

DAMPER INTERCONNECTING DETAILS



DETAIL # 19

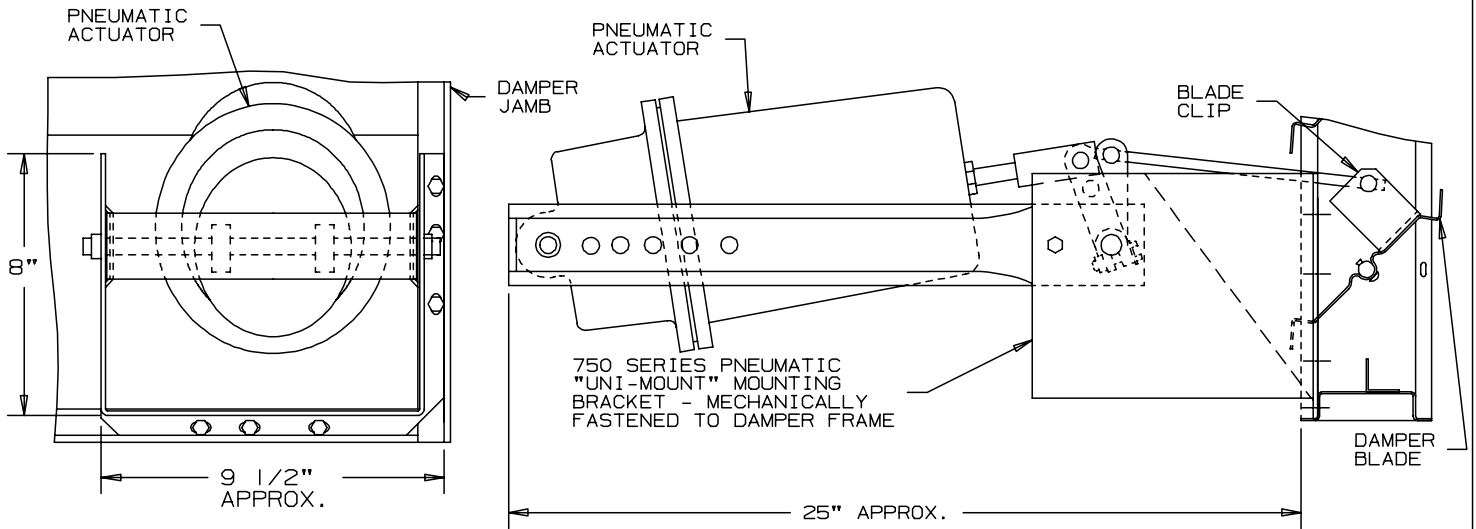
JACKSHAFT BEARING MOUNTING
BRACKET #36-0179-01
- MECHANICALLY FASTENED
TO FRAME (SEE DETAIL #11
FOR MOUNTING DETAIL)



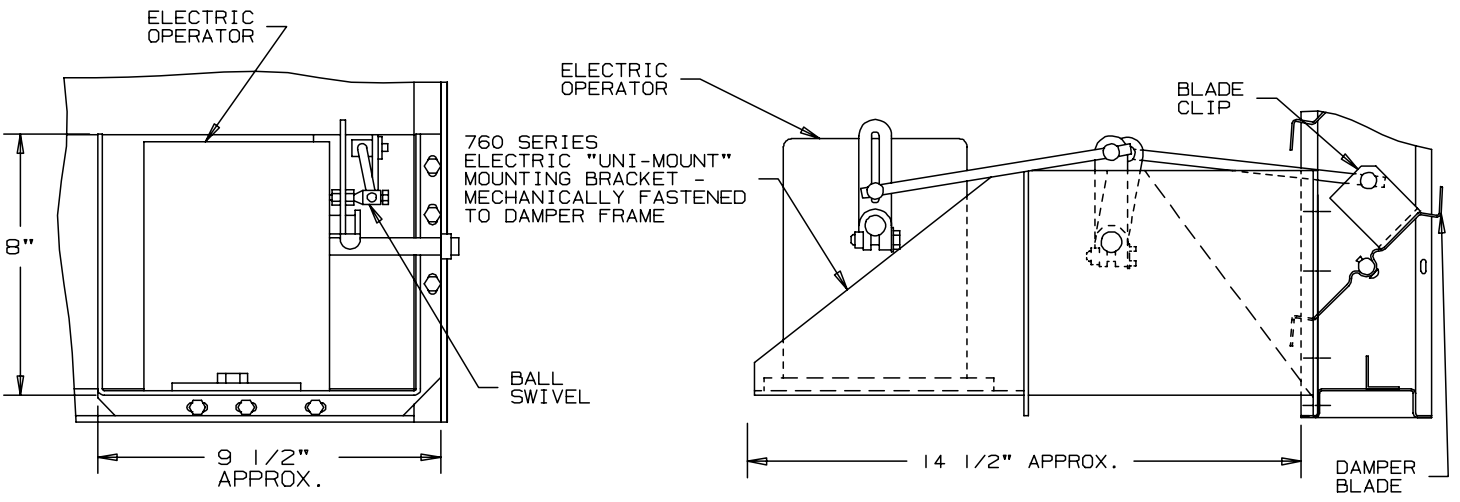
DETAIL # 20

JACKSHAFT BEARING MOUNTING
BRACKET #36-0179-01
- MECHANICALLY FASTENED
TO FRAME (SEE DETAIL #11
FOR MOUNTING DETAIL)

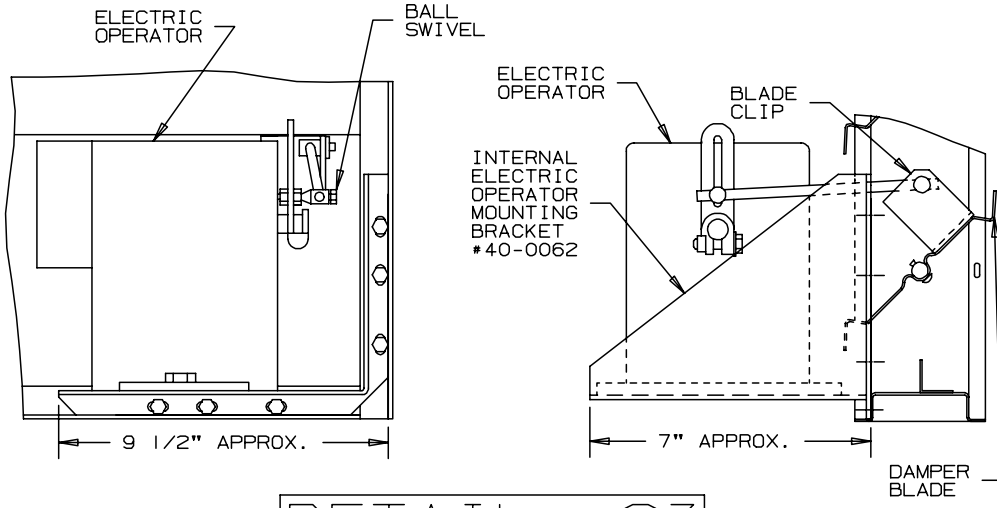
OPERATOR MOUNTING DETAILS



DETAIL # 21

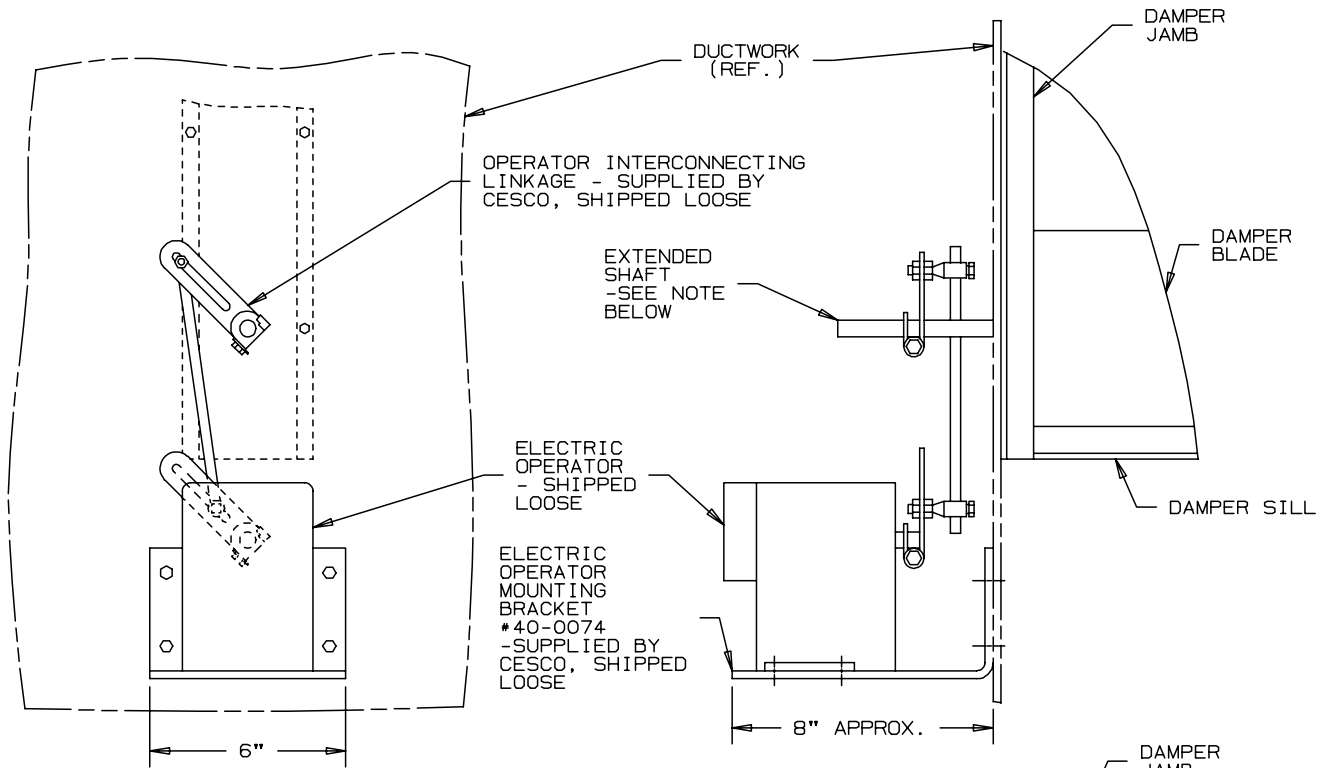


DETAIL # 22

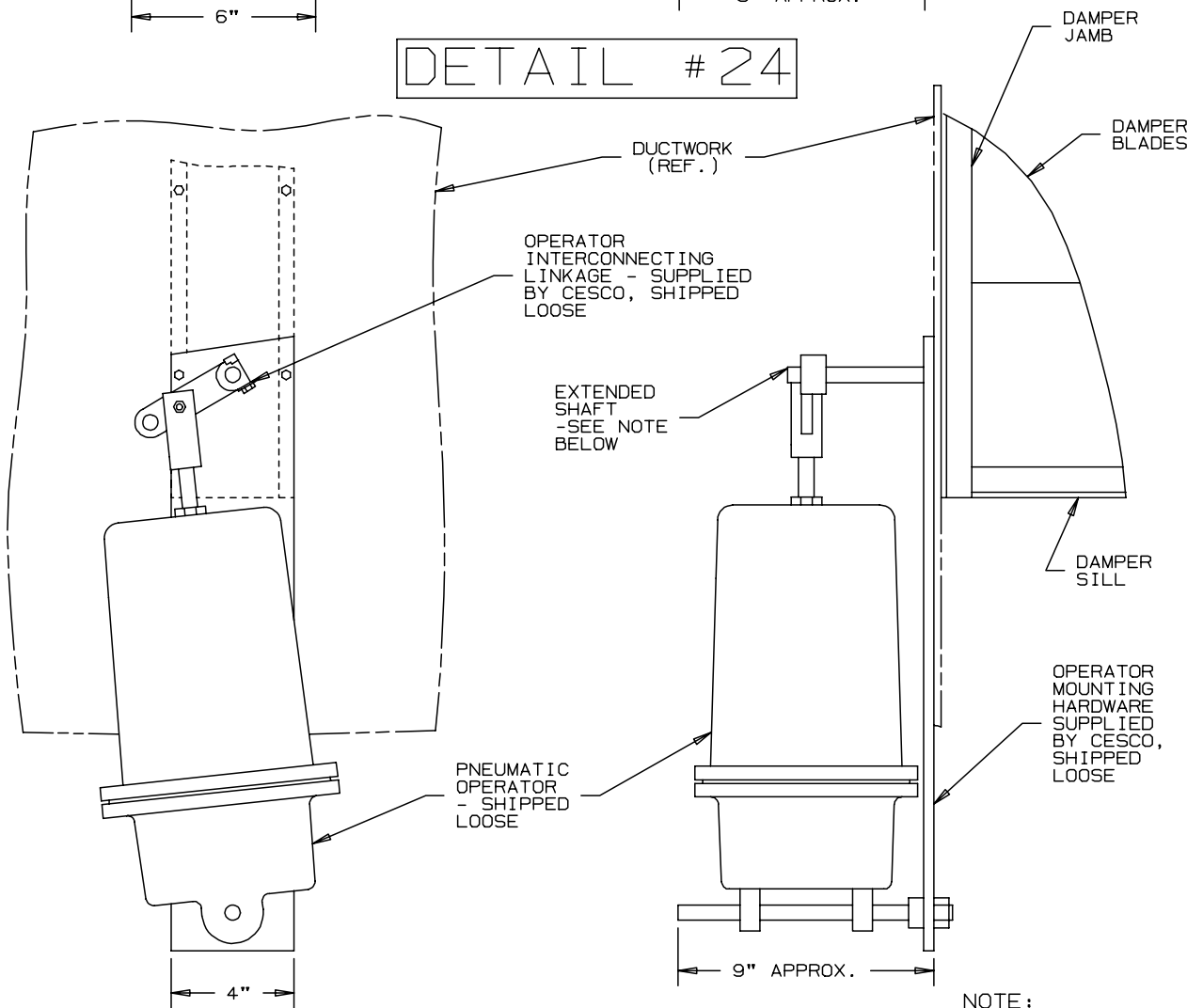


DETAIL # 23

OPERATOR MOUNTING DETAILS



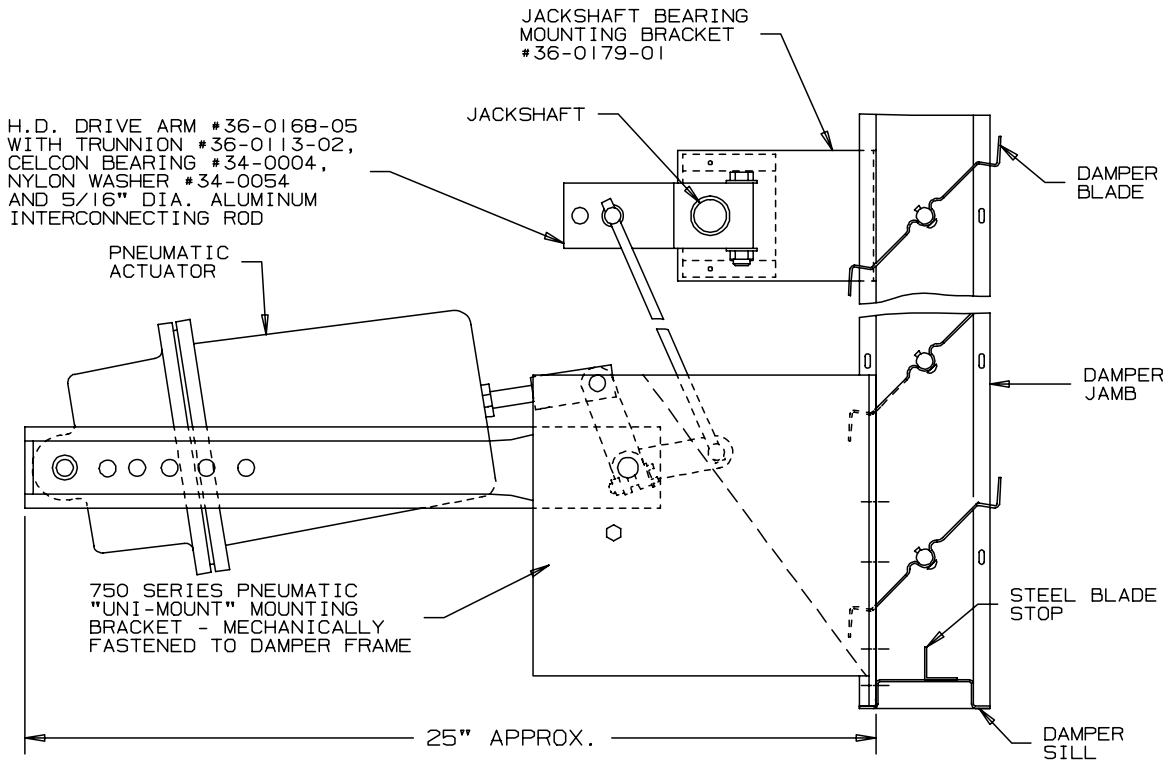
DETAIL # 24



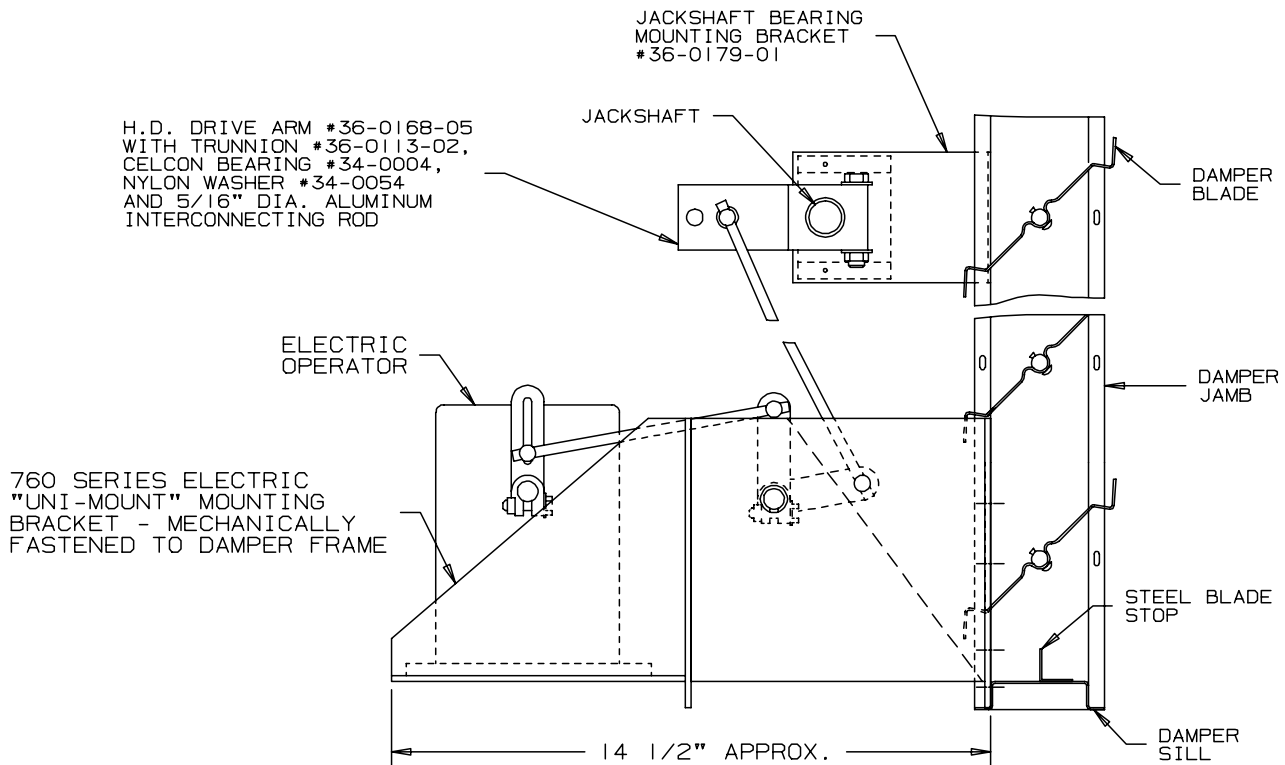
DETAIL # 25

NOTE:
CUSTOMER TO PROVIDE
CLEARANCE HOLE IN
DUCTWORK FOR EXTENDED
SHAFT.

OPERATOR MOUNTING DETAILS

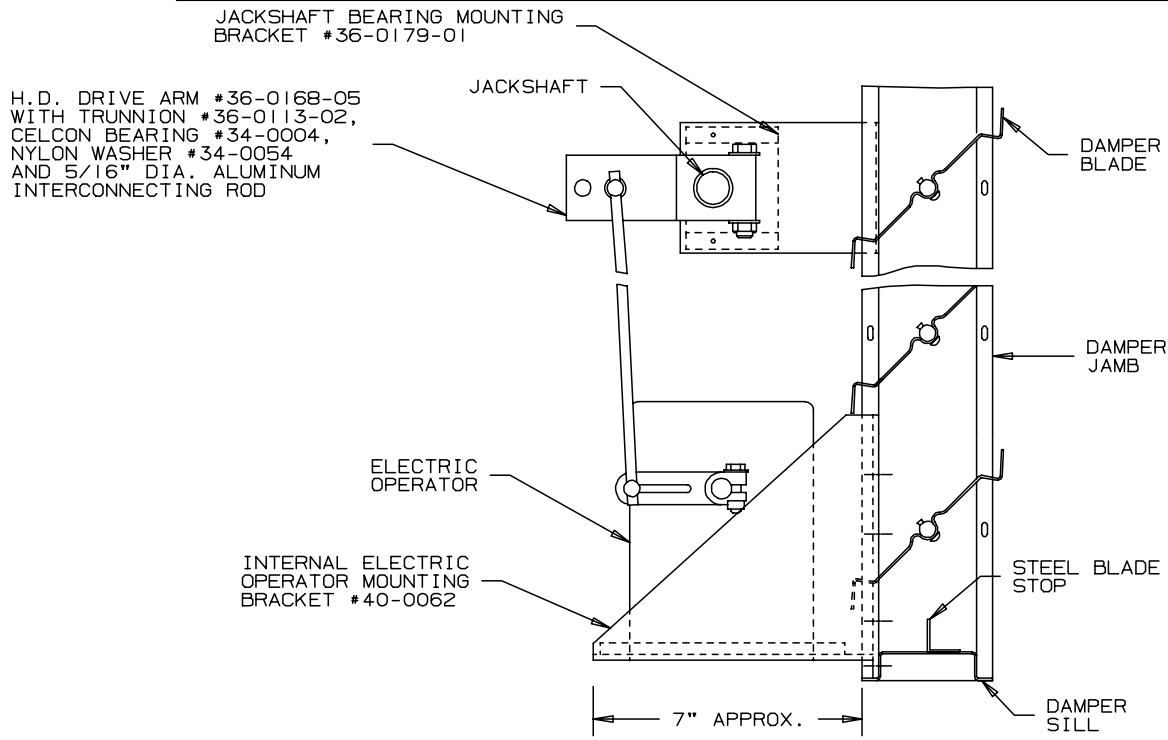


DETAIL # 26



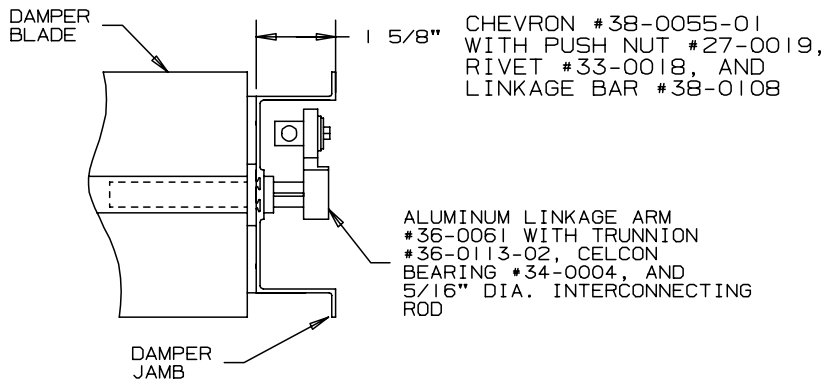
DETAIL # 27

OPERATOR MOUNTING DETAILS

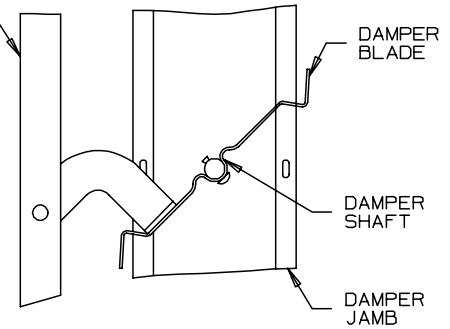


DETAIL # 28

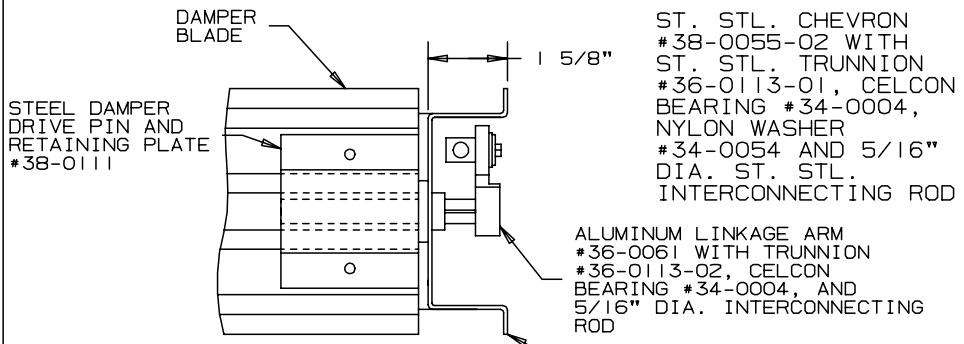
LINKAGE DETAILS



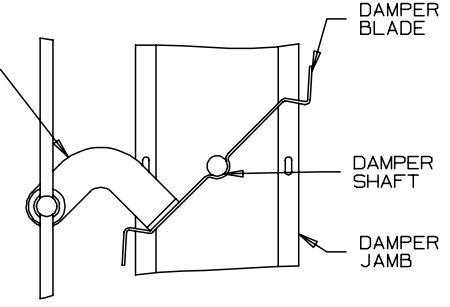
DETAIL # 29



DETAIL # 31



DETAIL # 30



DETAIL # 32